

- ◆ Fluid Power Laboratory established during 1986 at a cost of 2 crores. Covering an area of 600 Sqm., located at Kolar Gold Fields about 100 kms from Bangalore.
- ◆ The main activities of laboratory are evaluation of Hydraulic components for performance & reliability, providing inputs for the design and research towards up-gradation of hydraulic components.

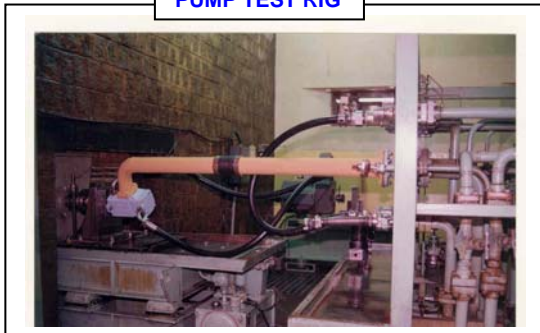
## TEST FACILITIES

- ◆ Pump Test Rig
- ◆ Control Valve Test Rig
- ◆ Cylinder Test Rig
- ◆ Impulse Hose Test Rig
- ◆ Filter Test Rig

## TEST FACILITIES

## SPECIFICATIONS

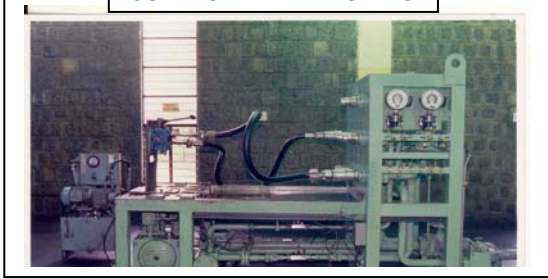
PUMP TEST RIG



- ◆ **Input Power (Max)** : 250 kW
- ◆ **Drive Speed (Max)** : 2200 rpm  
(Bi-Directional)
- ◆ **Discharge Pressure (Max)** : 250 Bar
- ◆ **Flow (Max)** : 600 lpm

## TEST FACILITIES

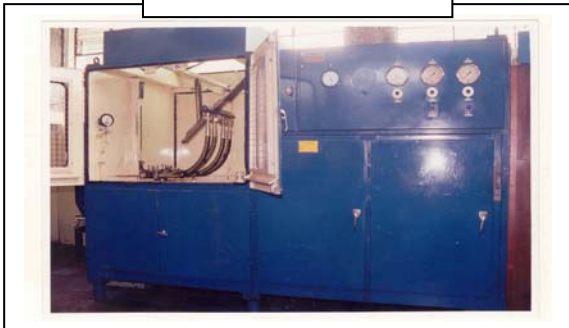
**CONTROL VALVE TEST RIG**



**CYLINDER TEST RIG**



**IMPULSE HOSE TEST RIG**



**FILTER TEST RIG**



## SPECIFICATIONS

- ◆ **Flow (Max)** : 600 lpm
- ◆ **System Pressure (Max)** : 350 Bar
- ◆ **Proof Pressure (Max)** : 1000 Bar
- ◆ **Ring Main Diff. Pressure** : 20 Bar

- ◆ **Slave Cylinder Load (Max):** 100 Ton
- ◆ **Stroke** : 2000 mm
- ◆ **System Pressure (Max)** : 350 Bar

- ◆ **Impulse Pressure (Max)** : 500 Bar
- ◆ **Impulse Frequency** : 35 - 75 CPM
- ◆ **Hose Size (Max)** : 2" I.D.
- ◆ **Test Oil Temp. (Max)** : 121°C.
- ◆ **Flex Impulse Facility Available**
- ◆ **Reference Standards** : SAE, BCS, IS

- ◆ **Flow (Max)** : 600 lpm
- ◆ **Diff. Pressure (Max)** : 20 Bar
- ◆ **Automatic Liquid : Range:** 2µm - 400µm  
**Particle Counter** Particles  
 (M/s. HAIC ROYCO, USA)
- ◆ **Working Principle** : Light Blocking
- ◆ **Contamination level Analysis of Oils**  
 As Per ISO / NAS Standards

**R&D is looking forward to provide quality testing & services to the industry. Interested parties may please approach :**

General Manager, R&D Division, BEML Limited

Kolar Gold Fields – 563 115, Karnataka State

Ph : 08153 264704/263228 FAX: 08153 263129 E-mail : g@bemlcad.com